

Porpoise Bay

The Sunshine Coast has provided settlers with abundant natural resources: logging, fishing, farming and the mining of sand, gravel and granite blocks have been the principal resource industries on the coast for over a hundred years.

Logging has been an important industry on the Sunshine Coast from the late 1800s and with its abundance of good timber, sand and gravel, Sechelt Inlet was a busy area. Early settlers Herbert Whitaker and his brother Ron started logging operations in the 1890s and had a sawmill on the west side of the Inlet as early as 1914. Other logging companies had, and still have, operations up and down Sechelt Inlet and the Sunshine Coast.

Sechelt Inlet has provided salmon, cod, herring and shellfish for local commercial and visiting sports fishermen for many years. Today the Inlet supports shrimp and crab collecting and fish and shellfish farms.

Many early settlers on the coast had three occupations; logging, fishing and farming. They grew their own fruit and vegetables, kept domesticated animals and sold their produce locally and in Vancouver. From 1913 until 1938 Mr. Jiro Konishi fished in the Inlet and farmed commercially on its west side.

Evidence of sand and gravel operations can be seen on the Inlet's east side with the largest mine still in operation. Over the years mining exploration occurred on both sides of the Inlet and in the mountains on the Sunshine Coast. From 1912 to 1913 a successful mining operation, just west of Sechelt, supplied granite blocks to pave the streets of Vancouver.



Logging at Sechelt in 1910

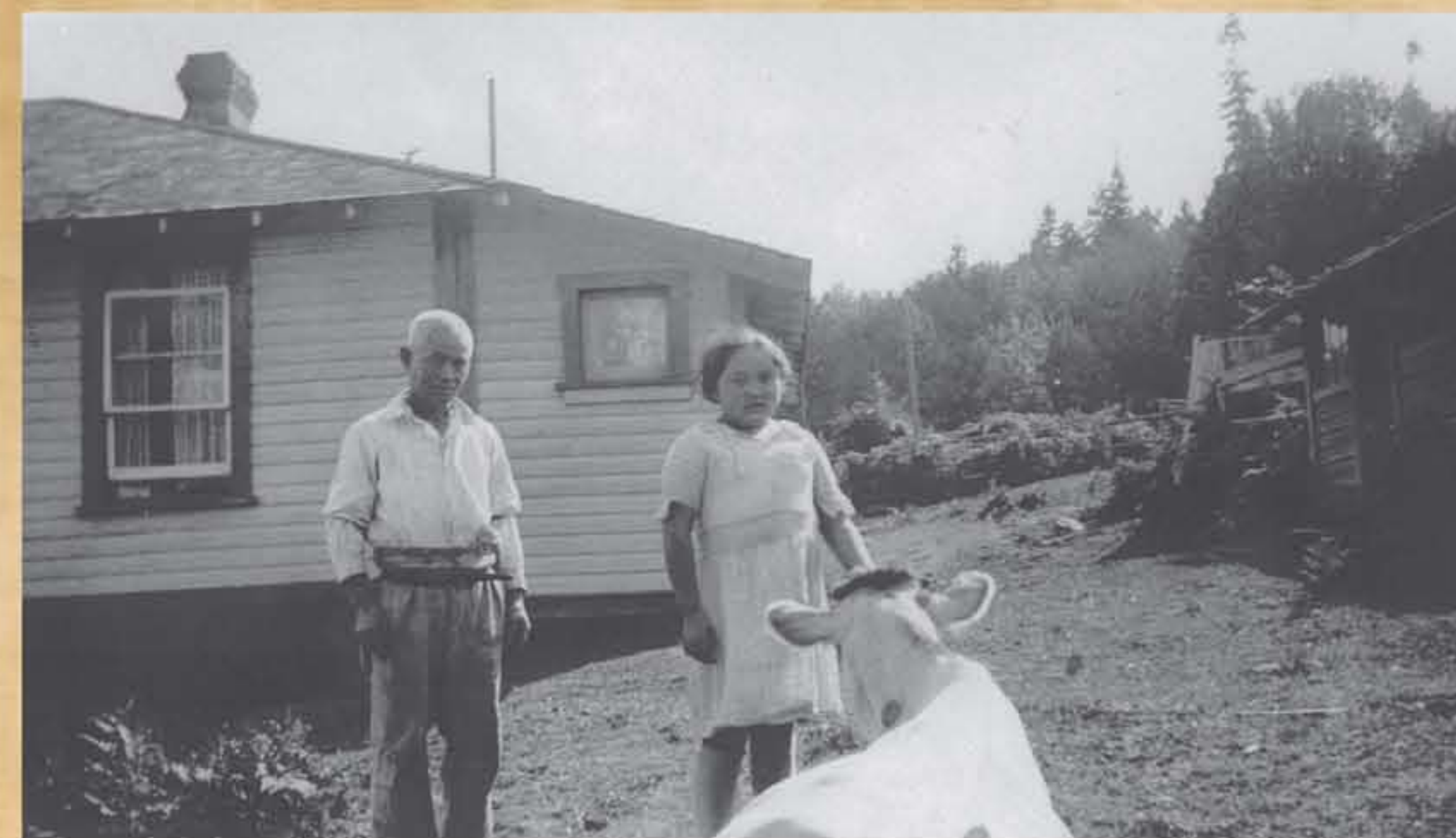


Logging truck with 9 foot (2.7m) diameter fir



Sawmill, Sechelt, B.C.

Whitaker brothers' sawmill operation probably around 1914 on west side of Inlet.



Jiro (Jim) Konishi (1882-1939) at Porpoise Bay with his daughter "Aggie" and his cow, probably during the 1930's. Their farm was located on the west side of the Inlet.