

DISTRICT OF SECHELT

Bylaw No. 420, 2004

A Bylaw to Remove the Dedication of a Highway, from a Portion of Highway at Islets Place, Tuwanek

WHEREAS the *Community Charter*, provides that Council may by bylaw remove the dedication of a highway that has been closed to all traffic;

AND WHEREAS that portion of road shown on the attached plan forming part of the Bylaw as Schedule "A" is no longer required for road purposes;

AND WHEREAS "District of Sechelt Portion of Islet Road Closure Bylaw No. 418, 2003" being in full force and effect, stops up and closes to traffic that portion of Islets Place shown outlined in the information plan attached to and forming part of this bylaw as Schedule "A";

AND WHEREAS public notice pursuant to the *Community Charter* has been given, and an opportunity has been given to persons who consider they are affected by the bylaw to make representations to Council;

NOW THEREFORE the Council of the District of Sechelt in open meeting assembled enacts as follows:

1. **TITLE**

This Bylaw may be cited for all purposes as "District of Sechelt Portion of Islets Place Removal of Highway Dedication Bylaw, No. 420, 2004".

2. **PROVISIONS**

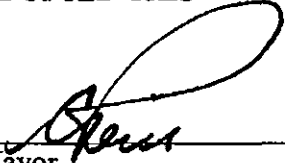
- (1) That the dedication of a highway applying only to that part of Islets Place shown outlined in the information plan attached to and forming part of this bylaw as Schedule "A" is hereby removed.
- (2) That the Mayor and Clerk are hereby authorized to execute and deliver all documentation necessary to give effect to the provisions of this Bylaw.

READ A FIRST TIME THIS 21st DAY OF January, 2004

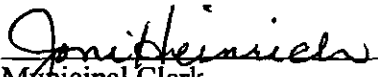
READ A SECOND TIME THIS 21st DAY OF January, 2004

READ A THIRD TIME THIS 21st DAY OF January, 2004

READ A FIRST TIME THIS	21st	DAY OF	January, 2004
READ A SECOND TIME THIS	21st	DAY OF	January, 2004
READ A THIRD TIME THIS	21st	DAY OF	January, 2004
ADOPTED THIS	7th	DAY OF	April, 2004




Mayor



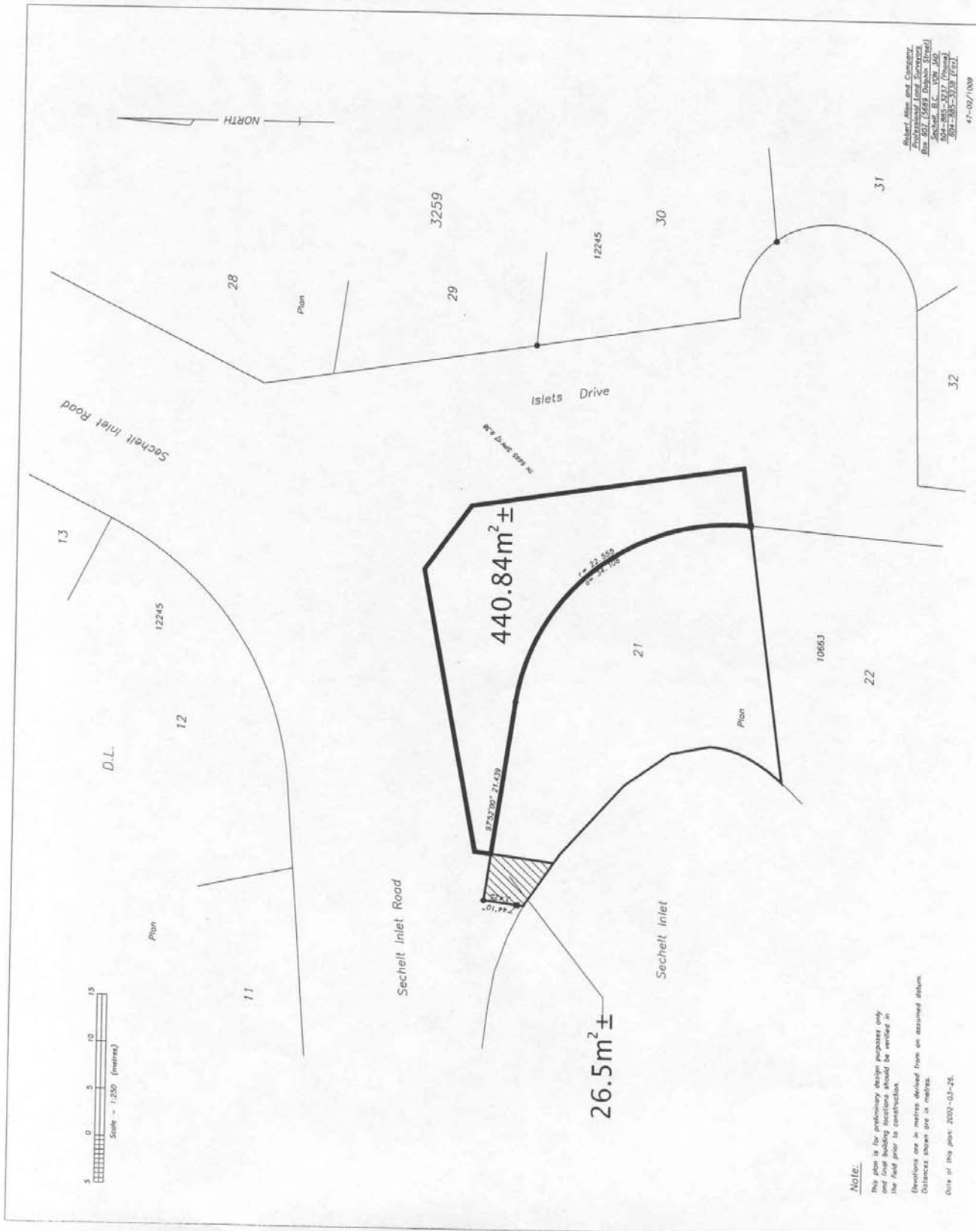
Municipal Clerk

I certify this to be a true and accurate copy of
"District of Sechelt Portion of Islets Place and Sechelt
Inlet Road, Road Closure and Removal of
Highway Dedication Bylaw, No. 420, 2004"



Municipal Clerk Jo-Anne Frank

Schedule "A" to Bylaw No. 420, 2004



Note:

This plan is for preliminary design purposes only. The owner is responsible for ensuring that all dimensions and areas are verified in the field prior to construction. Elevations are in metres derived from an assumed datum. Distances shown are in metres.

Date of this plan: 2002-03-26.

Robert Allen and Company
Professional Land Surveyors
Box 807, 15659 Delpin Street
Surrey, B.C. V3W 2G9
604-885-3737
604-885-3738 (FAX)

47-02/1009